

21763 Southeast 4th Place Sammamish, WA 98074

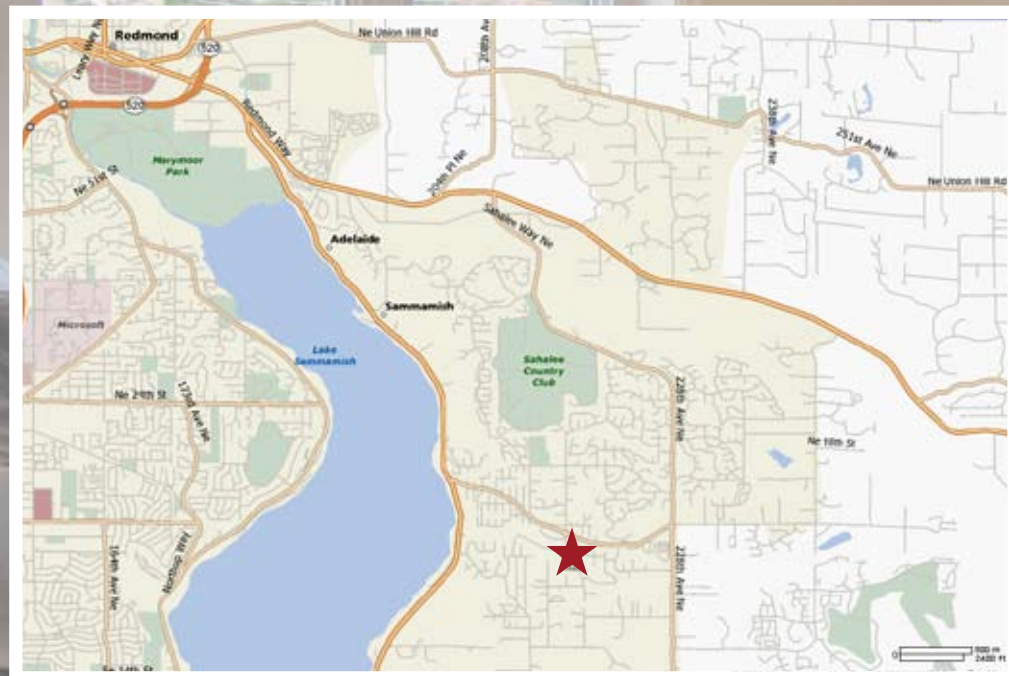


4 bedroom, 3.25 bath
4,267 sq. ft. living
17,452 lot size per kcr
mls# 28074399



ASPEN GROVE

This fantastic location offers so much! It feels a world away... yet all the conveniences are right here! Groceries, hardware, coffee shops, and more... just minutes away!
Hiking, biking, skiing and snowboarding all within an hour.
Redmond 10 minutes Bellevue 20 minutes Seattle 30 minutes



Doris Ong

Results you can count on.



425.890.2087

e-mail: homes@dorisong.com

www.dorisong.com



www.dorisong.com

The Suburban Residence

Aspen Grove... a prime location with a feel that is a world away. Lot sizes more typical of a rural setting, yet you are minutes from all the conveniences of close-in living.

This home is the former Model Home built to showcase the talents of the Builder and its Design team. One of Chaffey's most desired floor plans... the flow, the use of space centering around the courtyard, and the functionality are simply superb.

Sophisticated architecture and stunning details in craftsmanship are everywhere you turn. Luxurious materials assembled into a palette of warmth and depth. Dramatic two story entry with mosaic tile in-lays and wrought iron railings that highlight the grand staircase that opens into the living room and foyer. An art niche is thoughtfully placed as a focal point of elegance and style. Formal spaces with towering ceilings layered in crown moulding and detailed millwork... bask yourself in the rewards of your success.

The kitchen is an epicurean delight. Alder cabinets full of richness and character set the tone. Dacor, Bosch & Subzero stainless appliances provide the essentials for a home of this magnitude. Tropic brown slab granite counters are complimented by an art tile backsplash. The open flowing floor plan leads you from the kitchen into the breakfast area through to the family room that is truly inspiring. The heart and soul of this home and the many warm memories that this home will create, will be here.

Take it all in... the box beamed ceiling is absolutely stunning, the rockery and how it embraces the fireplace, and the natural light that highlights every detail. Envision the season's reflection over the years to come.

The kitchen area also opens into a wonderful courtyard with stamped concrete, built in gas barbeque, and an enormous backyard. The expansive lawn is perfect for sports and large gatherings.

Continuing on to the den, you will find a wood wrapped interior with wet bar, wine fridge and wine cellar.

Upstairs, you will discover four generously proportioned bedrooms, a bonus room, and three full bathrooms. The master suite is truly spectacular with sitting area and Juliet balcony. The master bath is part sanctuary, part spa. The soaking tub set in a corner, framed by a walk-in shower with a wall of glass blocks eases your senses. Abundant cabinets, oversized walk in closets with California closet systems will accommodate all your storage needs and keep your wardrobe organized.

From functionality to warmth of style, your demanding lifestyle has been taken into consideration and then some. Home... is Aspen Grove!

Coffered and crowned ceilings...



Family room extraordinary living...



Kitchen design and details without compromise...



Grand master suite and sitting area...



Tuscan warmth and style...



Main floor den and built ins...



What a way to wind down the day...



Wrought iron and trim details...



For More Information or an appointment to see, call: 425.890.2087

Doris Ong REALTOR
Results you can count on.

