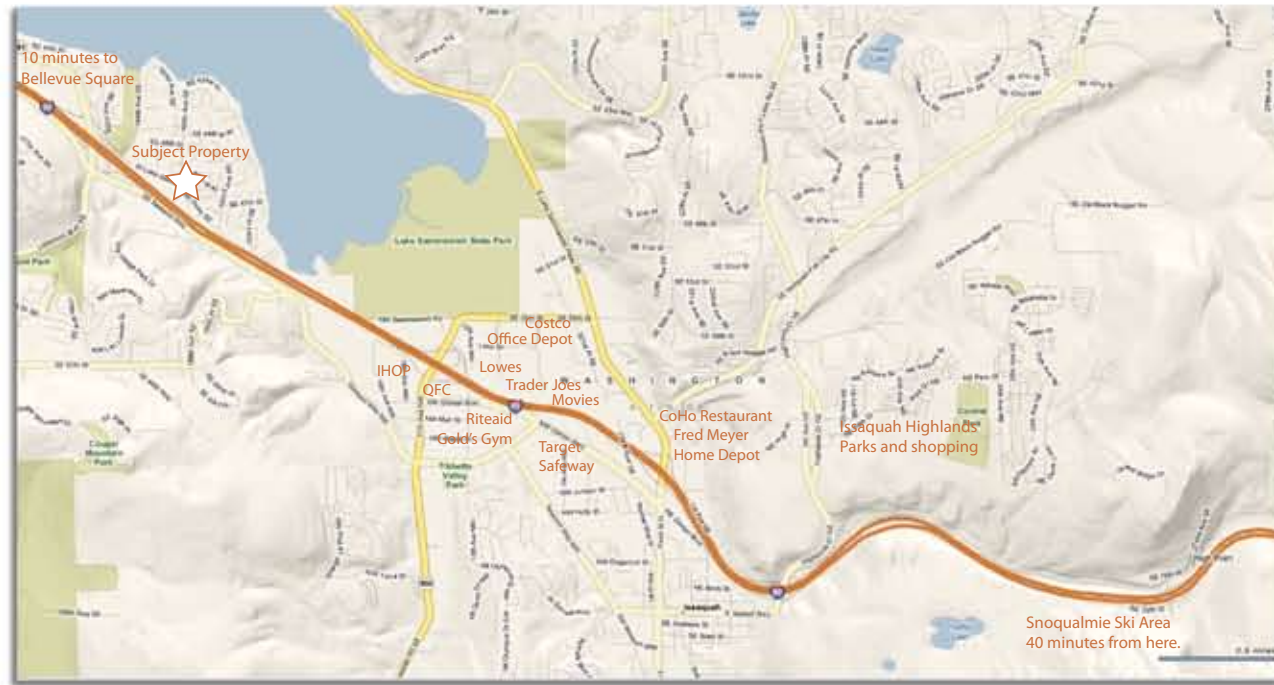


Over 50 homes sold in South Lake Sammamish... put this experience to work for you!



Just a short walk to several parks in the neighborhood. Meerwood park is just around the corner with a tennis court, basketball area and a giant playset. Timberlake Park has a nice sandy beach for lake activities. The Sammamish state park is nearby with beach access and fields of fun. The boat launch is nearby as well.

This convenient South Lake Sammamish location has easy access to the I-90 and makes a quick commute to Seattle and Bellevue...just 15 – 20 minutes west. There is a multitude of shopping, movie theatres, and eateries just minutes away. Mountain activities are 35 minutes east. Home is....South Lake Sammamish.

4633 189th Place SE Issaquah, WA 98027

New Price! \$575,000 MLS# 29063635

4 bedroom 2.25 bath Built: 1980

Approx. 2480 sq. ft. Living Lot Size: 7952 per KCR

2008 Taxes: \$4772

Call Doris for an appointment or for more Information:

Cell: 425-890-2087

e-mail: doris@dorisong.com

www.dorisong.com



NEW PRICE!

Designer Style in this Wonderful Home!



4633 189th Place SE Issaquah, WA 98027



www.dorisong.com



The Stenzel Residence

Much sought after Community of South Lake Sammamish. Stylishly remodeled 4 bedroom home with entertaining in mind. Enter into a double height foyer met with cascading staircase to the upper level. Designer paint colors in the formal living room and dining room with vaulted living room ceilings setting the stage. The custom kitchen is the center of the home. Design elements include honed absolute black granite slab counters, white subway set tile accents, undermount sink and GE "Cafe" stainless appliances. Café is the new appliance suite offered by GE that is restaurant inspired. Leaded glass front cabinetry displays your china in a subtle and classic setting. Huntwood custom cabinetry offers plenty of storage with deep pantry and built-in pullouts. The rich chestnut stained hardwood flooring, crown moulding and designer colors tie the new kitchen together perfectly. The raised counter also can accommodate a casual gathering spot while the meals are being prepared or relax in the adjacent family room with built in speakers and a fireplace plumbed for gas. Flowing to the backyard, a Zen like sanctuary awaits you! It started with a designer from Reynold's Landscaping. Working with the flow of the land, the goal was to integrate entertaining spaces with existing mature landscaping and gently sloping topography. Step



out onto an expansive patio with filtered westerly exposure. Meandering curves of custom cut pavers flow from one area to the next. High Cascade granite rockery is nestled here and there and is used to form steps as well, creating an elegant feel that is peaceful to the eye and soul. Entertain in style with outdoor speakers or sit back to a warm summer breeze. Upstairs you will find four bedrooms which include a hall bath and a master suite. The Master bedroom is spacious and overlooks the patio and nature in total privacy. The remaining bedrooms have been upgraded in a personal way that reflects the love this house has received over the years. As well, the home has been recently painted inside and out, with new white vinyl windows and a new roof. With a wonderful neighborhood, great location, and an excellent school district, Home is... South Lake Sammamish!

Doris Ong 
Results you can count on.

425.890.2087

e-mail: homes@dorisong.com
www.dorisong.com